

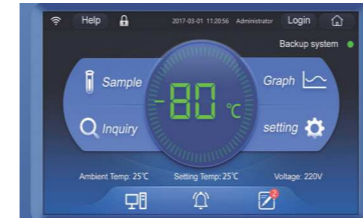
Haier Biomedical Salvum brand of ULT freezers has been designed to deliver energy savings and reduced carbon footprint. This range uses environmentally safe hydrocarbon refrigerants and high efficiency fan motors to maximize the cooling ability of the system and reduce energy consumption. While providing sample safety, the freezer design makes energy savings possible for laboratories.



DW-86L829



DW-86L579

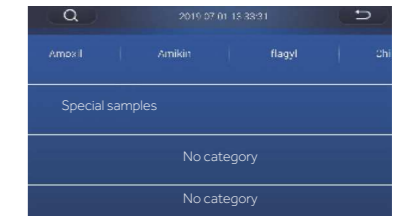


### Large Intelligent LCD Screen Visual Management

10-inch high-performance LCD capacitive screen, sensitive touch operation; intuitive display of inside temperature, ambient temperature, input voltage and other data and temperature curves.

### Inventory Management System

The single version of the inventory management allows users who do not have a racking system within the freezer to easily record item locations, entry and exit records.



Single version (standard)



Professional version(optional)

In instances where customers use racking systems, the optional professional version of the inventory management is available. Freezer racks, boxes, and vials can easily record item locations and entry and exit records, facilitate item inventory and statistics, realize multi-screen interaction and reduce errors through secondary verification.

The freezer comes with the single version as standard.

### Equipped with Multiple Interfaces

- Standard USB interface, capable of storing data for 10 years
- Standard remote alarm terminal RS485 port



### Multiple Options for Safe Management and Control Systems

Standard password lock, optional fingerprint module, punch card module, face recognition, realizing safe and secure multi-user management.

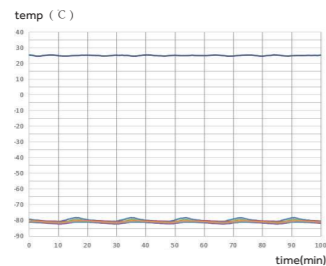
### Optional IoT System Realizes Real-time Monitoring

The IoT APP can monitor the operating status of the equipment anytime and anywhere. Equipped with multiple alarm functions and able to self-diagnose system faults to ensure sample safety. (Contact your local area representative to check local availability.)



### Safe and Secure with Multiple Alarms

Multiple alarm functions include high temperature alarm, low temperature alarm, sensor failure alarm, power failure alarm, low battery alarm, door ajar alarm and high ambient temperature alarm.



### Precise Temperature Control Ensures Safe Storage

Adjustable temperature set-point between -40°C ~ -86°C and the ability to monitor temperature curves in real time, equipped with sophisticated temperature safety alarm system to ensure product safety.

### Ergonomic Design



#### Narrow Door Design

The freezer can pass through an 750mm wide door when the door is open



#### New Handle Design

Adopting exclusive slide design, easy to open and close the door



#### Pressure Equalization Port

Equipped with pressure equalization port, realize easy opening  
Adopts chromium plating, rust-proof



#### Porthole

Two portholes as standard, allows for independent testing of cabinet temperature



#### Filter Design

Tool-free removable filter design, easy and quick to clean the filter



#### Detachable Inner Door Design

Tool-free detachable inner door, realizing easy and quick defrost

### Specifications

Model	DW-86L419	DW-86L579	DW-86L729	DW-86L829		
Technical Data	Cabinet Type	Upright	Upright	Upright	Upright	
	Climate Class	N	N	N	N	
	Cooling Type	Direct cooling	Direct cooling	Direct cooling	Direct cooling	
	Defrost Mode	Manual	Manual	Manual	Manual	
	Refrigerant	HC	HC	HC	HC	
Performance	Sound Level (dB(A))	47	47	52	52	
	Cooling Performance (°C)	-86	-86	-86	-86	
Control	Temp Range (°C)	-40~-86	-40~-86	-40~-86	-40~-86	
	Controller	Microprocessor	Microprocessor	Microprocessor	Microprocessor	
Electrical Data	Display	LCD Touchscreen	LCD Touchscreen	LCD Touchscreen	LCD Touchscreen	
	Power Supply (V/Hz)	220-240/50	220-240/50	220-240/50	220-240/50	
	Electrical Current (A)	5	5.5	9	10	
Construction	Power Consumption (kWh/24h)	8	9	10	11	
	Capacity (L/Cu.Ft)	419/14.8	579/20.45	729/25.75	829/29.3	
	Net/Gross Weight (approx)	kg	255/286	300/330	350/385	380/410
		lbs	562.2/630.5	661.4/727.5	771.6/848.8	837.7/903.9
	Interior Dimensions (W*D*H)	mm	465*716*1310	620*716*1310	766*716*1310	870*716*1310
		in	18.3*28.2*51.6	24.4*28.2*51.6	30.2*28.2*51.6	34.3*28.2*51.6
Exterior Dimensions (W*D*H)	mm	830*980*1980	903*980*1960	1049*980*1980	1153*980*1980	
	in	32.7*38.6*78.0	35.6*38.6*77.2	41.3*38.6*78.0	45.4*38.6*78.0	
Packing Dimension (W*D*H)	mm	874*1073*2127	948*1078*2127	1100*1105*2150	1190*1045*2150	
	in	34.4*42.2*83.7	37.3*42.4*83.7	43.3*43.5*84.6	46.9*41.1*84.6	
Loading Quantities	Container Load (20'/40'/40'H)	12/26/26	12/24/24	10/20/20	10/20/20	
	High/Low Temp	Y	Y	Y	Y	
	Hot Condenser	Y	Y	Y	Y	
	Power Failure	Y	Y	Y	Y	
	High/Low Voltage	Y	Y	Y	Y	
	Sensor Error	Y	Y	Y	Y	
	Low Battery	Y	Y	Y	Y	
	High Ambient Temp	Y	Y	Y	Y	
	Door Ajar	Y	Y	Y	Y	
Accessories	Caster	Y	Y	Y	Y	
	Foot	Y	Y	Y	Y	
	Porthole	Y/2	Y/2	Y/2	Y/2	
	Shelves/ Inner Doors	3/2	3/4	3/4	3/4	
	USB Interface	Y	Y	Y	Y	
	Remote Alarm (Dry contacts)	Y	Y	Y	Y	
	5V Power Supply Port	Y	Y	Y	Y	
	Temp Recorder	Optional	Optional	Optional	Optional	
	RS485 Port	Y	Y	Y	Y	
	CO <sub>2</sub> Backup System	Optional	Optional	Optional	Optional	
LN <sub>2</sub> Backup System	Optional	Optional	Optional	Optional		
Certification	CE	Y	Y	Y	Y	
	Energy star	/	Y	Y	Y	

Product appearance and specifications are subject to change without notice